

1 in = 4 miles

(At original document size of 11"x17")

## Cassia County: Segment 7 Approved BLM Lands Route

Route shown was drawn using the Proposed Route provided to Cassia County by the BLM in 2012. The intent of these maps is to provide a reference to the possible location of the Gateway West Transmission Line Project and not to provide a definitive location.

Index Sheet

**21**



1 inch = 1,320 feet  
(At original document size of 11"x17")

**Cassia County: Segment 7 Approved BLM Lands Route**

Route shown was drawn using the Proposed Route provided to Cassia County by the BLM in 2012. The intent of these maps is to provide a reference to the possible location of the Gateway West Transmission Line Project and not to provide a definitive location.



1 inch = 1,320 feet  
(At original document size of 11"x17")

**Cassia County: Segment 7 Approved BLM Lands Route**

Route shown was drawn using the Proposed Route provided to Cassia County by the BLM in 2012. The intent of these maps is to provide a reference to the possible location of the Gateway West Transmission Line Project and not to provide a definitive location.



**BLM Approved Segment**

Seg 07 Alt 7C

r/w - 125

125

3275

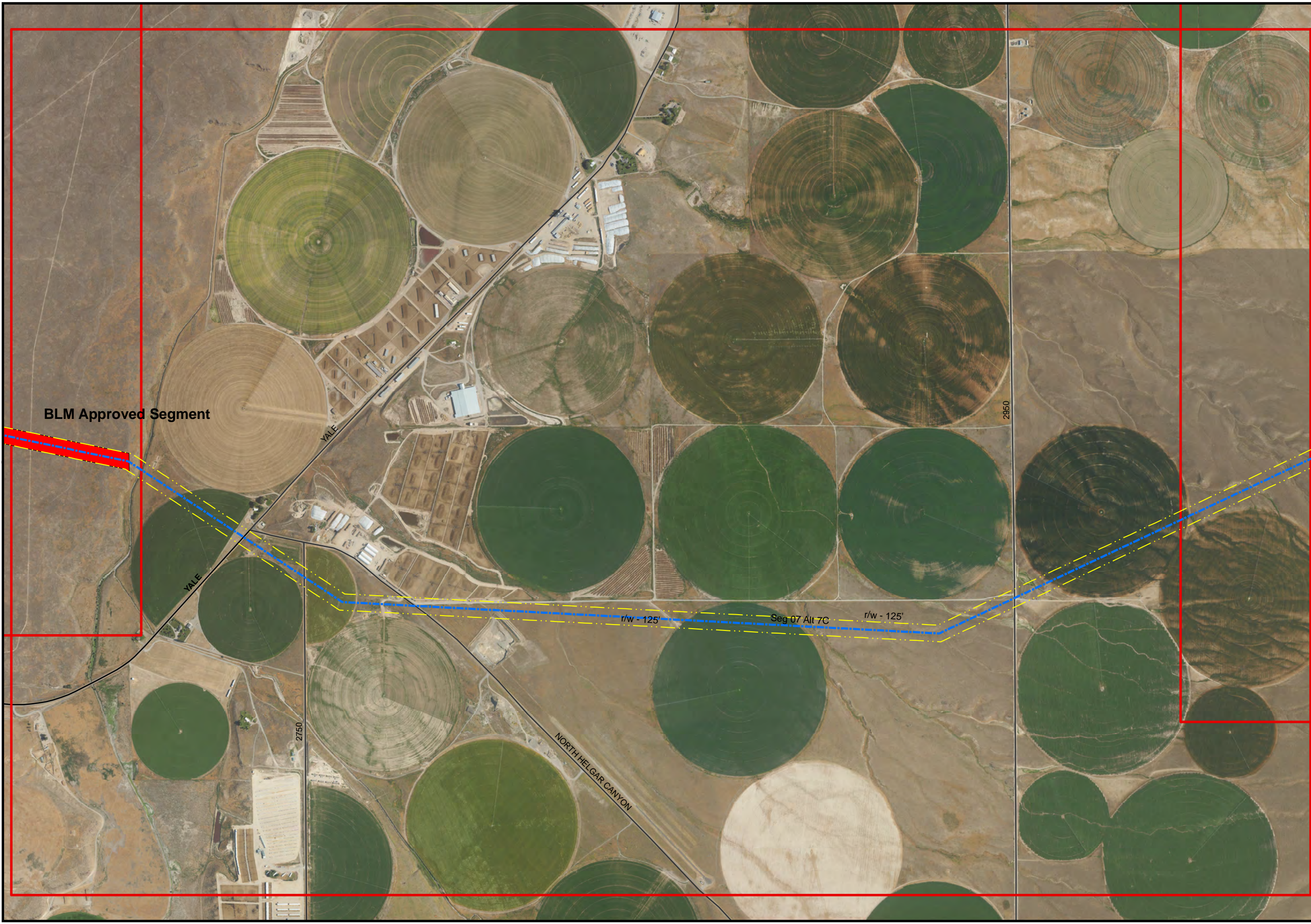
3350



1 inch = 1,320 feet  
(At original document size of 11"x17")

**Cassia County: Segment 7 Approved BLM Lands Route**

Route shown was drawn using the Proposed Route provided to Cassia County by the BLM in 2012. The intent of these maps is to provide a reference to the possible location of the Gateway West Transmission Line Project and not to provide a definitive location.



1 inch = 1,320 feet  
(At original document size of 11"x17")

**Cassia County: Segment 7 Approved BLM Lands Route**

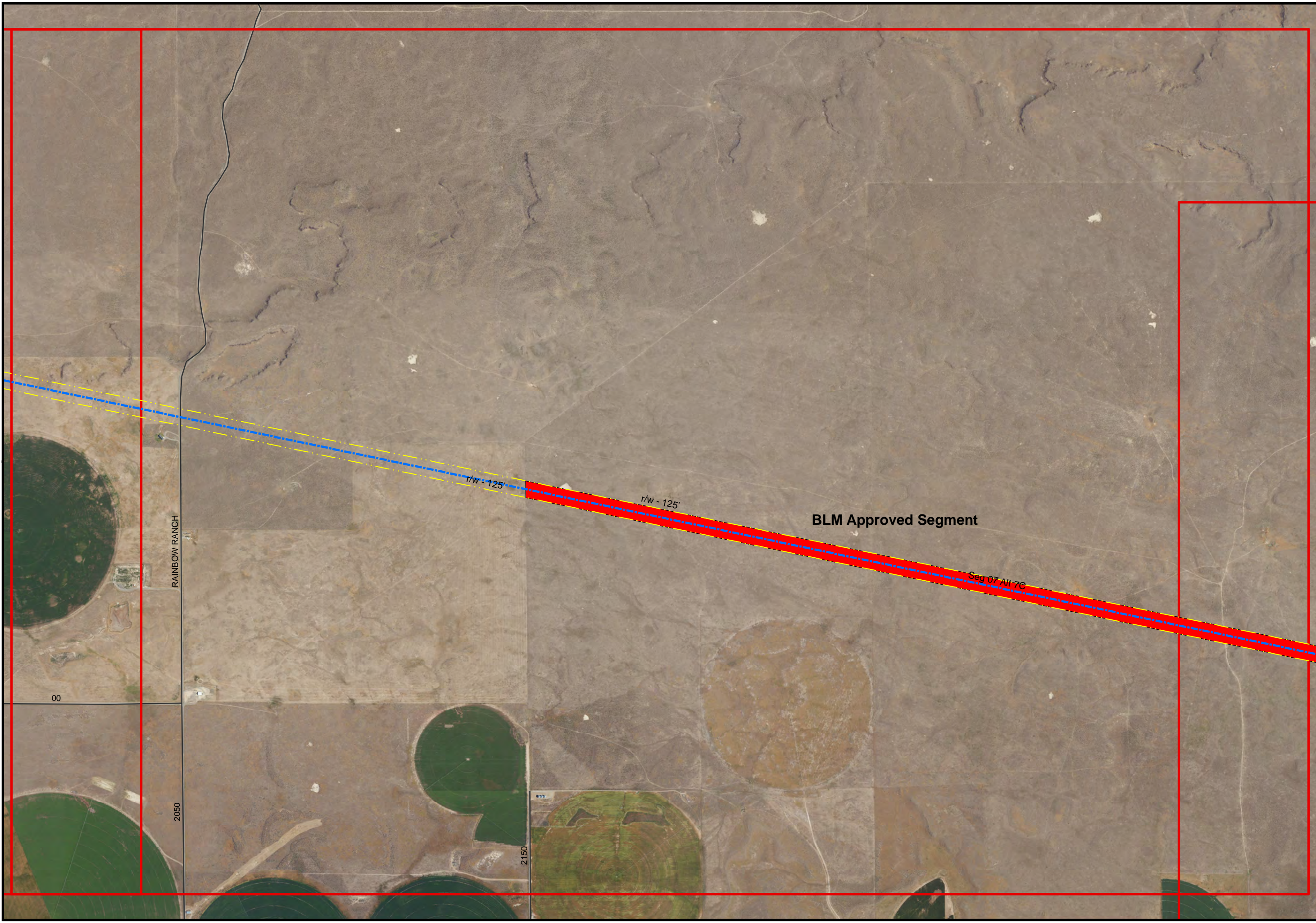
Route shown was drawn using the Proposed Route provided to Cassia County by the BLM in 2012. The intent of these maps is to provide a reference to the possible location of the Gateway West Transmission Line Project and not to provide a definitive location.



1 inch = 1,320 feet  
(At original document size of 11"x17")

**Cassia County: Segment 7 Approved BLM Lands Route**

Route shown was drawn using the Proposed Route provided to Cassia County by the BLM in 2012. The intent of these maps is to provide a reference to the possible location of the Gateway West Transmission Line Project and not to provide a definitive location.



1 inch = 1,320 feet

(At original document size of 11"x17")

**Cassia County: Segment 7 Approved BLM Lands Route**

Route shown was drawn using the Proposed Route provided to Cassia County by the BLM in 2012. The intent of these maps is to provide a reference to the possible location of the Gateway West Transmission Line Project and not to provide a definitive location.



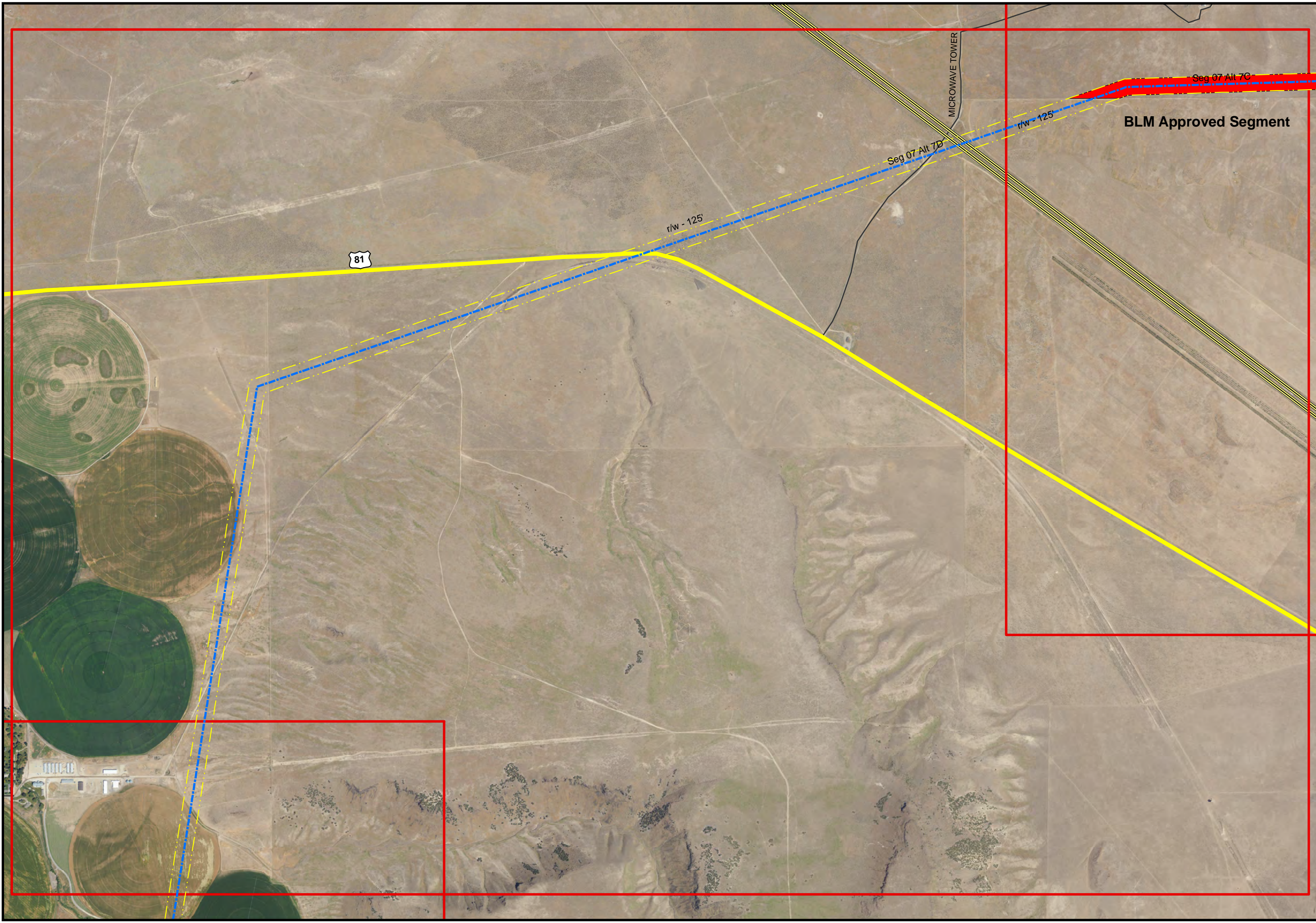
1 inch = 1,320 feet

(At original document size of 11"x17")

**Cassia County: Segment 7 Approved BLM Lands Route**

Route shown was drawn using the Proposed Route provided to Cassia County by the BLM in 2012. The intent of these maps is to provide a reference to the possible location of the Gateway West Transmission Line Project and not to provide a definitive location.

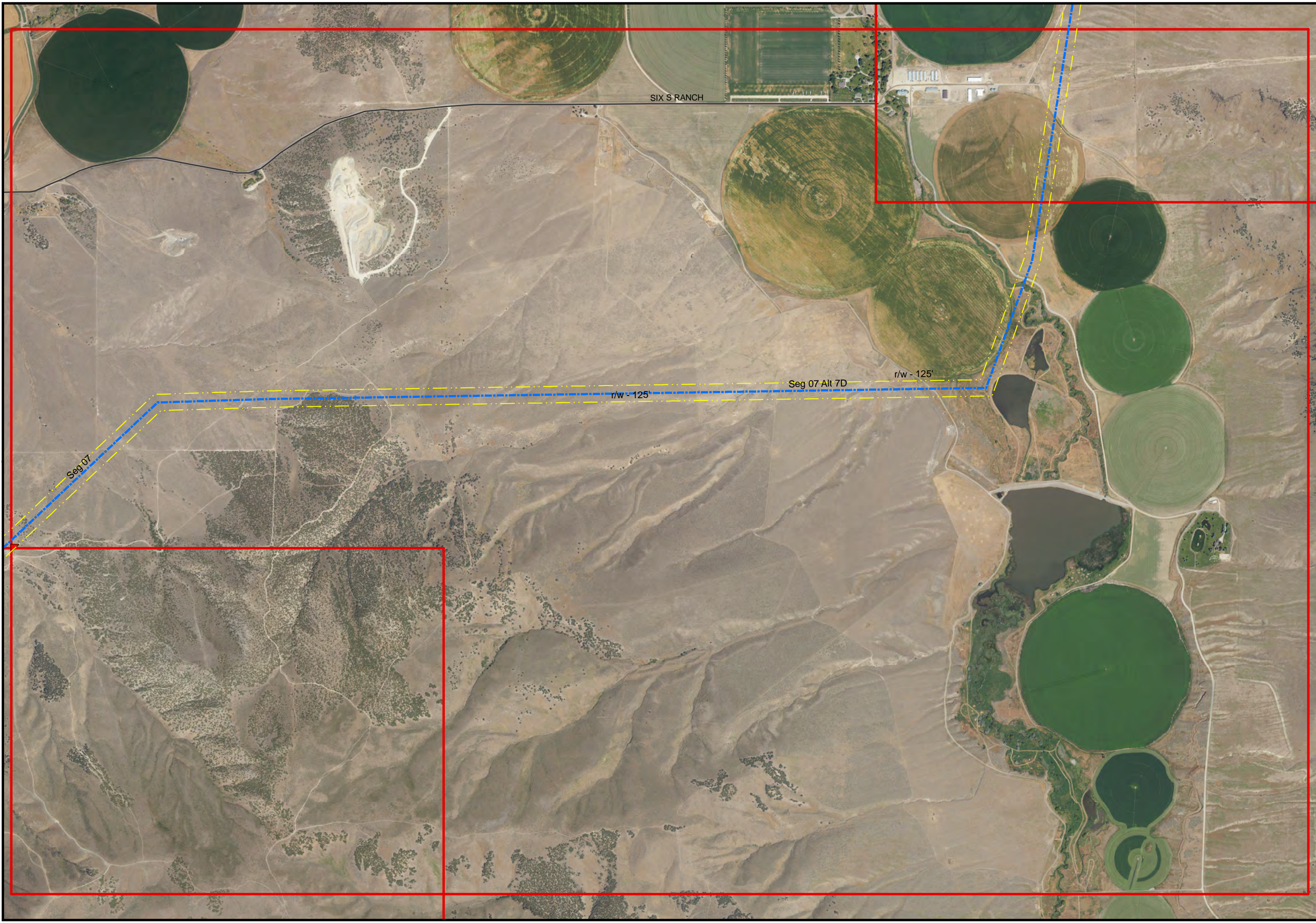




1 inch = 1,320 feet  
(At original document size of 11"x17")

**Cassia County: Segment 7 Approved BLM Lands Route**

Route shown was drawn using the Proposed Route provided to Cassia County by the BLM in 2012. The intent of these maps is to provide a reference to the possible location of the Gateway West Transmission Line Project and not to provide a definitive location.

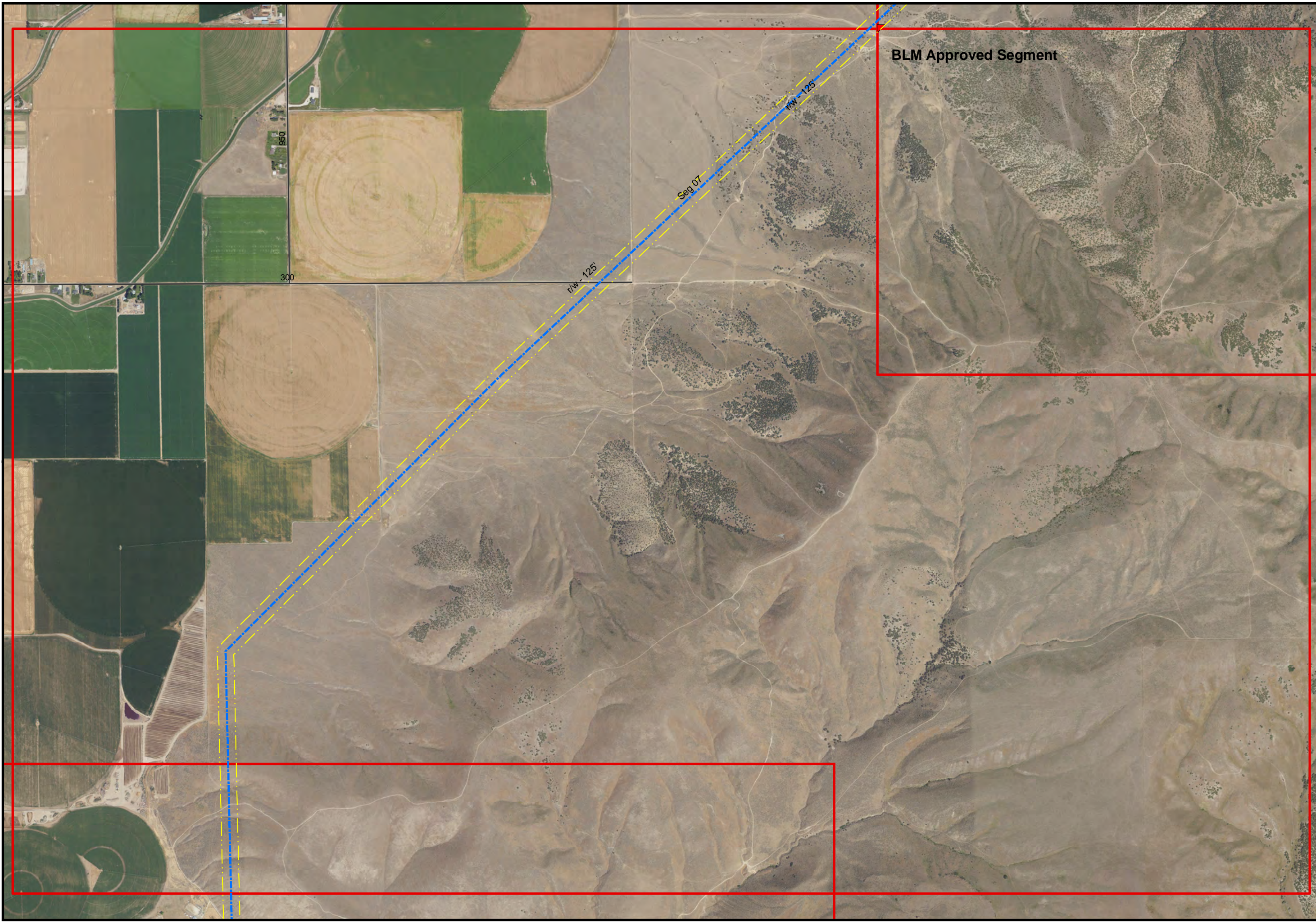


1 inch = 1,320 feet

(At original document size of 11"x17")

**Cassia County: Segment 7 Approved BLM Lands Route**

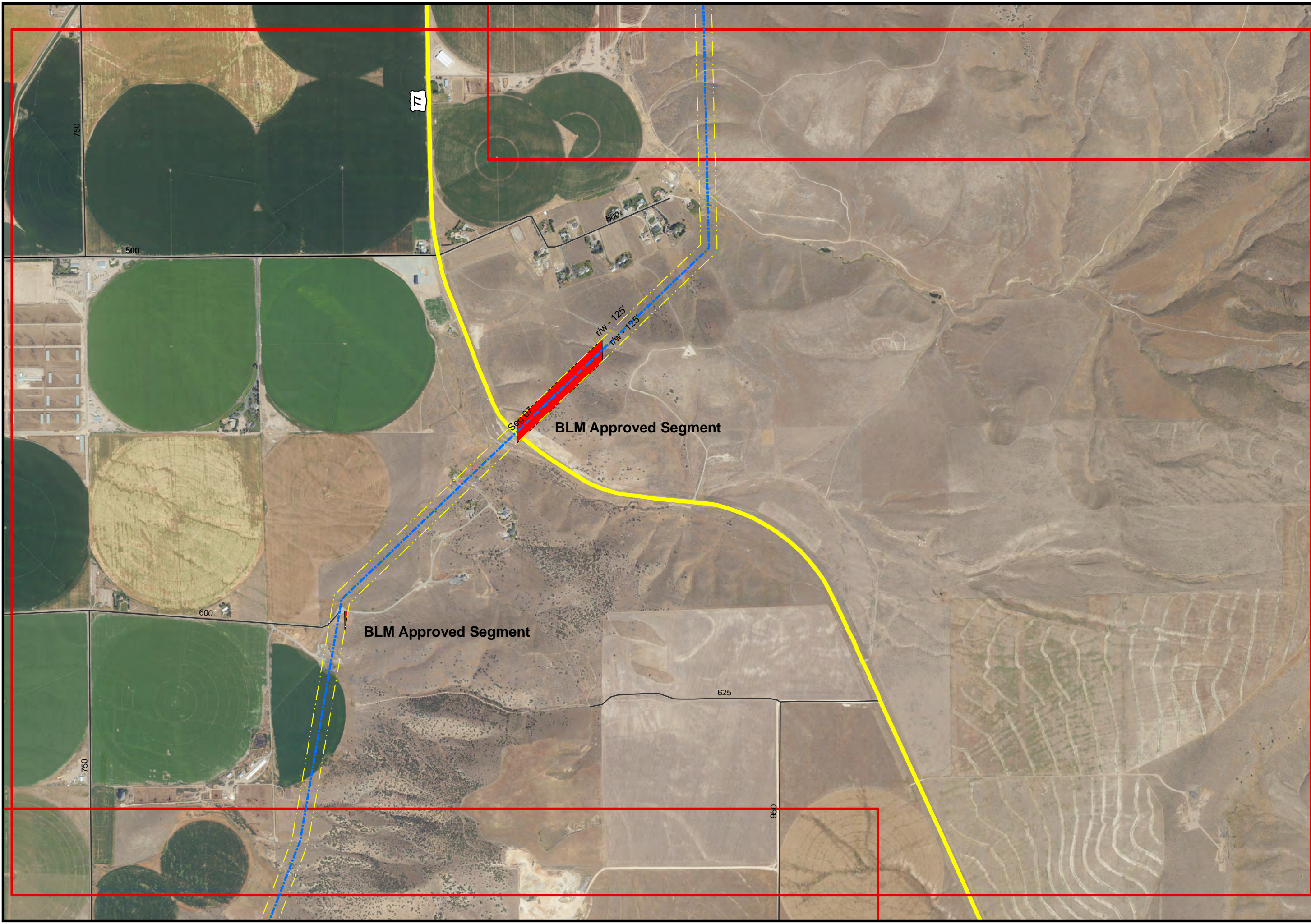
Route shown was drawn using the Proposed Route provided to Cassia County by the BLM in 2012. The intent of these maps is to provide a reference to the possible location of the Gateway West Transmission Line Project and not to provide a definitive location.



1 inch = 1,320 feet  
(At original document size of 11"x17")

**Cassia County: Segment 7 Approved BLM Lands Route**

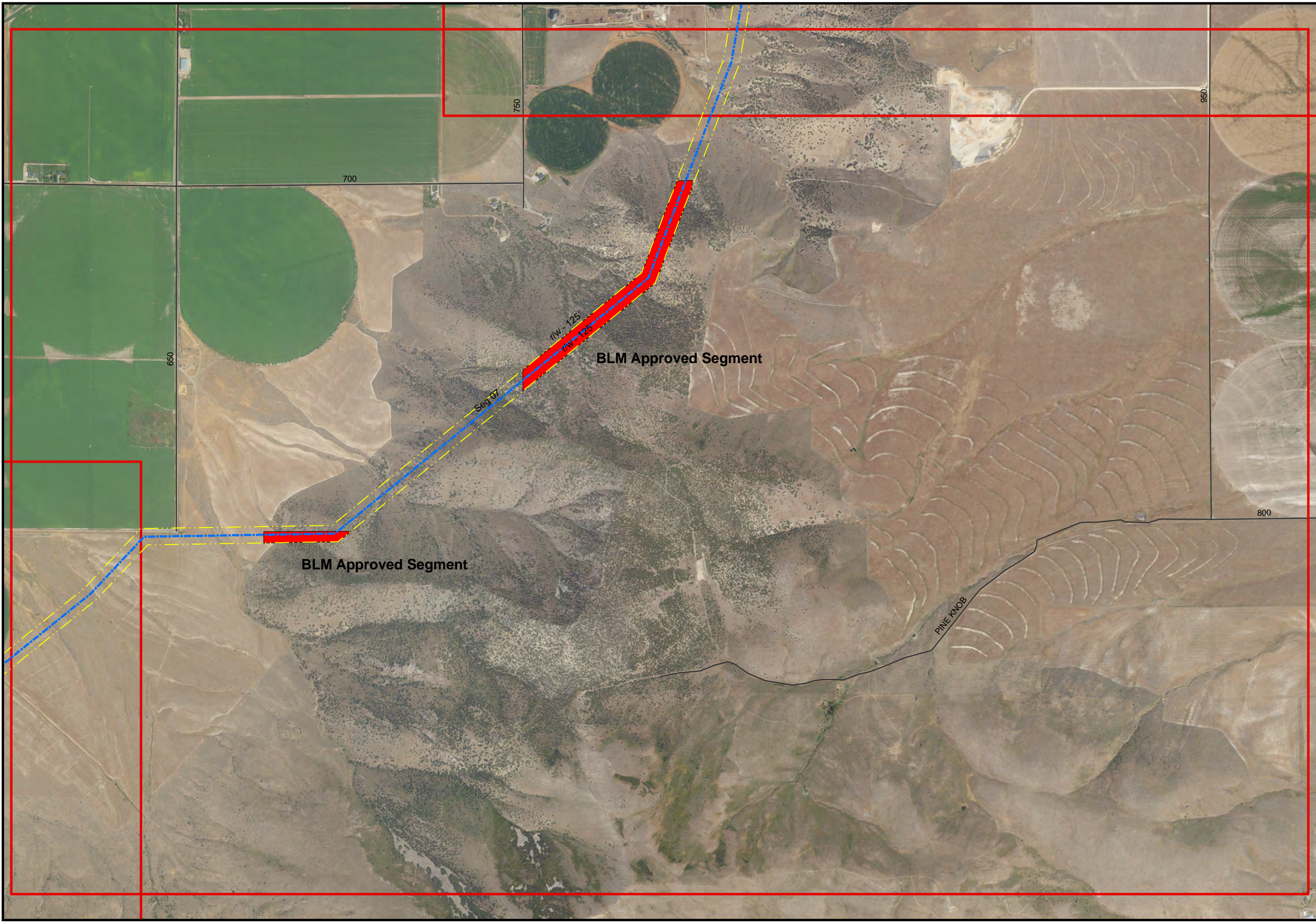
Route shown was drawn using the Proposed Route provided to Cassia County by the BLM in 2012. The intent of these maps is to provide a reference to the possible location of the Gateway West Transmission Line Project and not to provide a definitive location.



1 inch = 1,320 feet  
(At original document size of 11"x17")

### Cassia County: Segment 7 Approved BLM Lands Route

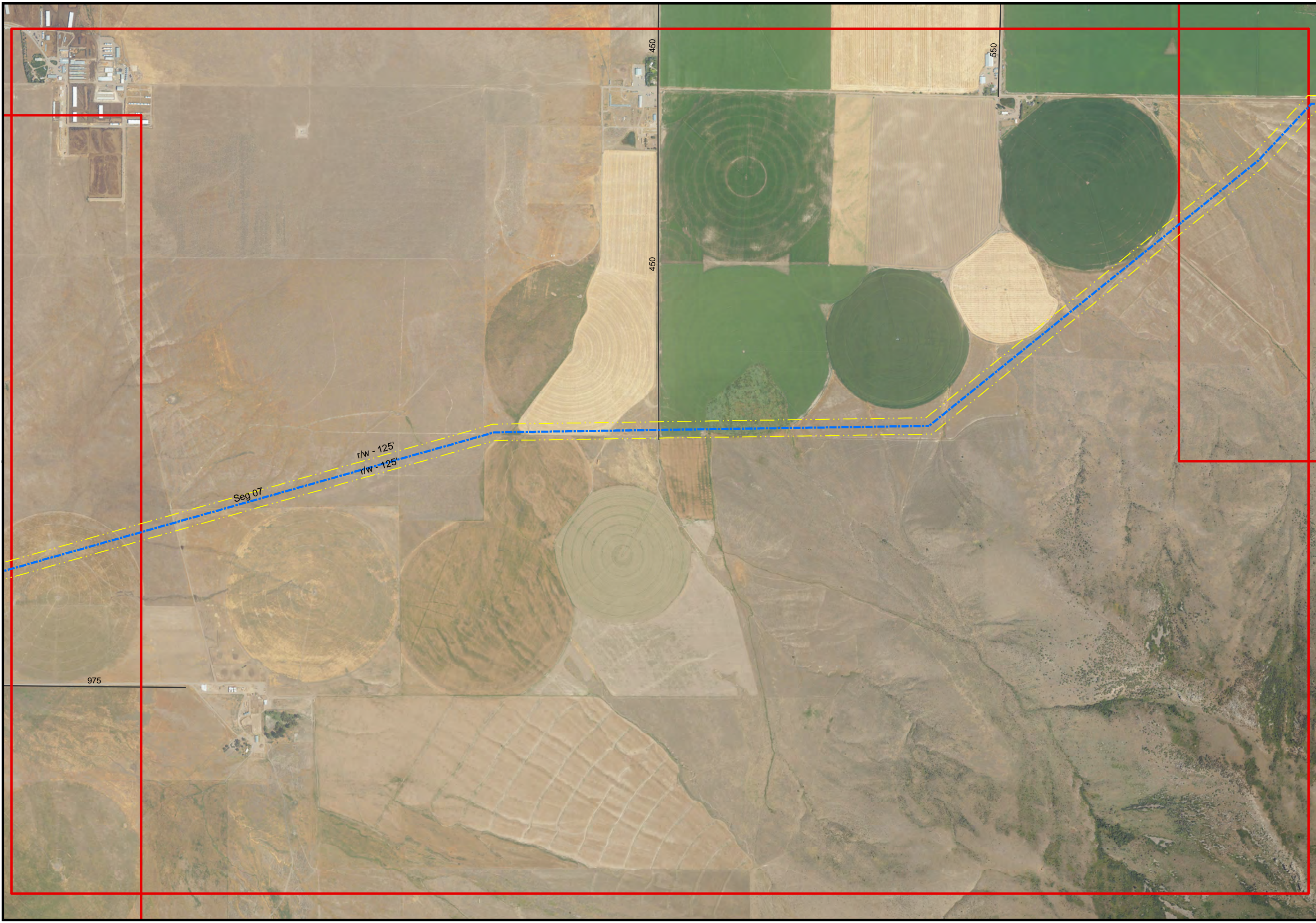
Route shown was drawn using the Proposed Route provided to Cassia County by the BLM in 2012. The intent of these maps is to provide a reference to the possible location of the Gateway West Transmission Line Project and not to provide a definitive location.



1 inch = 1,320 feet  
(At original document size of 11"x17")

### Cassia County: Segment 7 Approved BLM Lands Route

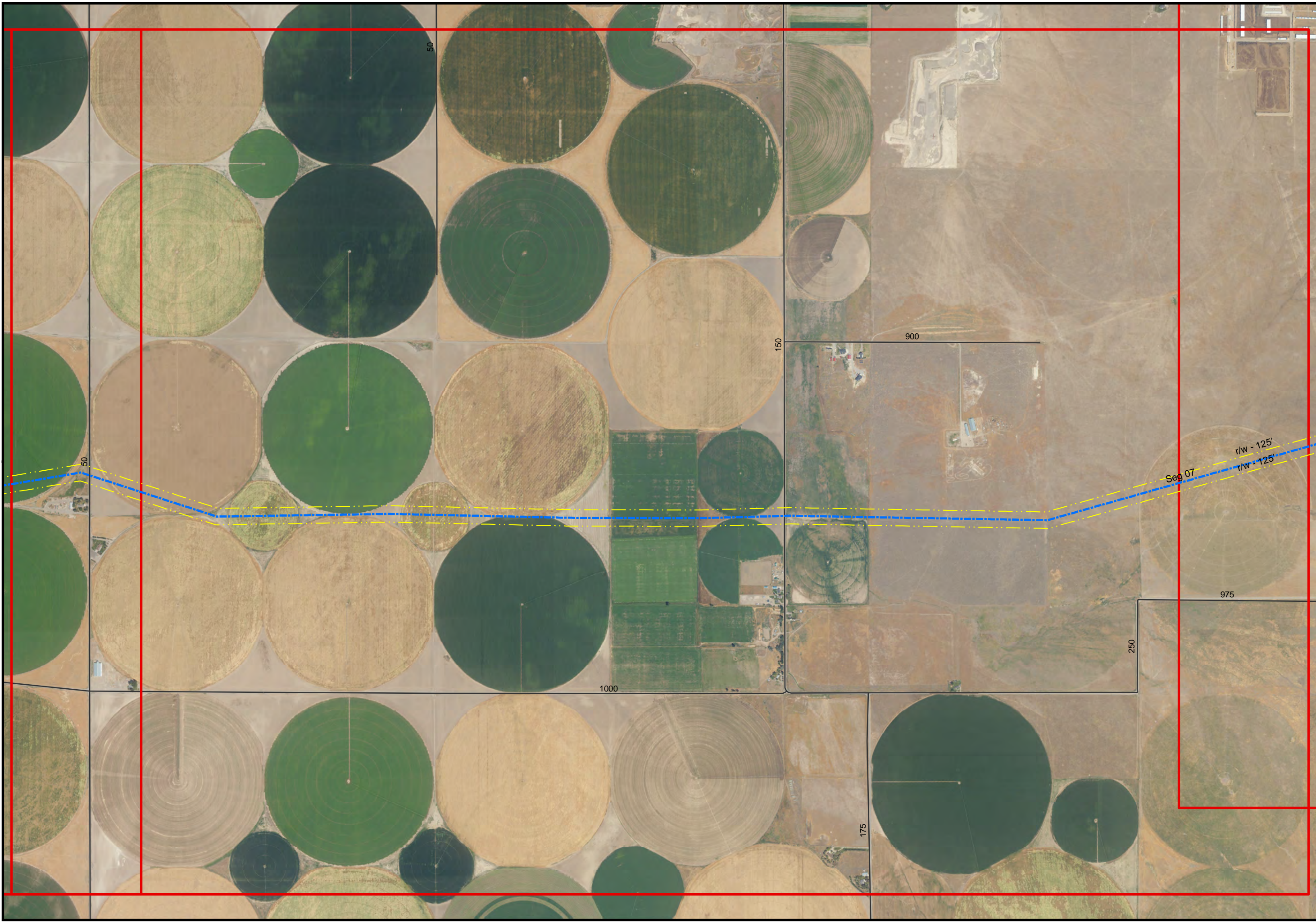
Route shown was drawn using the Proposed Route provided to Cassia County by the BLM in 2012. The intent of these maps is to provide a reference to the possible location of the Gateway West Transmission Line Project and not to provide a definitive location.



1 inch = 1,320 feet  
(At original document size of 11"x17")

**Cassia County: Segment 7 Approved BLM Lands Route**

Route shown was drawn using the Proposed Route provided to Cassia County by the BLM in 2012. The intent of these maps is to provide a reference to the possible location of the Gateway West Transmission Line Project and not to provide a definitive location.



1 inch = 1,320 feet  
(At original document size of 11"x17")

### Cassia County: Segment 7 Approved BLM Lands Route

Route shown was drawn using the Proposed Route provided to Cassia County by the BLM in 2012. The intent of these maps is to provide a reference to the possible location of the Gateway West Transmission Line Project and not to provide a definitive location.



1 inch = 1,320 feet  
(At original document size of 11"x17")

### Cassia County: Segment 7 Approved BLM Lands Route

Route shown was drawn using the Proposed Route provided to Cassia County by the BLM in 2012. The intent of these maps is to provide a reference to the possible location of the Gateway West Transmission Line Project and not to provide a definitive location.





1 inch = 1,320 feet  
(At original document size of 11"x17")

### Cassia County: Segment 7 Approved BLM Lands Route

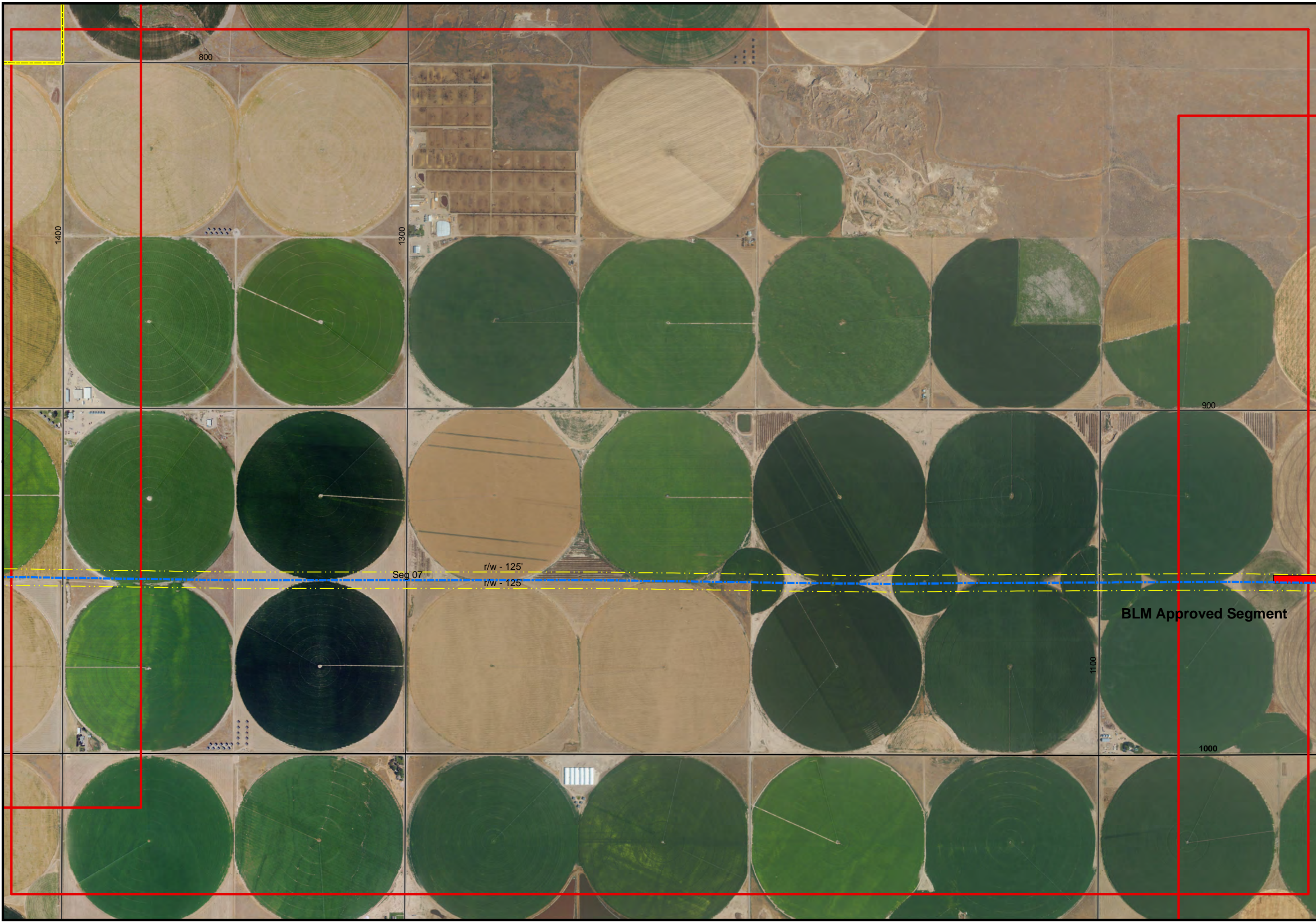
Route shown was drawn using the Proposed Route provided to Cassia County by the BLM in 2012. The intent of these maps is to provide a reference to the possible location of the Gateway West Transmission Line Project and not to provide a definitive location.



1 inch = 1,320 feet  
(At original document size of 11"x17")

### Cassia County: Segment 7 Approved BLM Lands Route

Route shown was drawn using the Proposed Route provided to Cassia County by the BLM in 2012. The intent of these maps is to provide a reference to the possible location of the Gateway West Transmission Line Project and not to provide a definitive location.



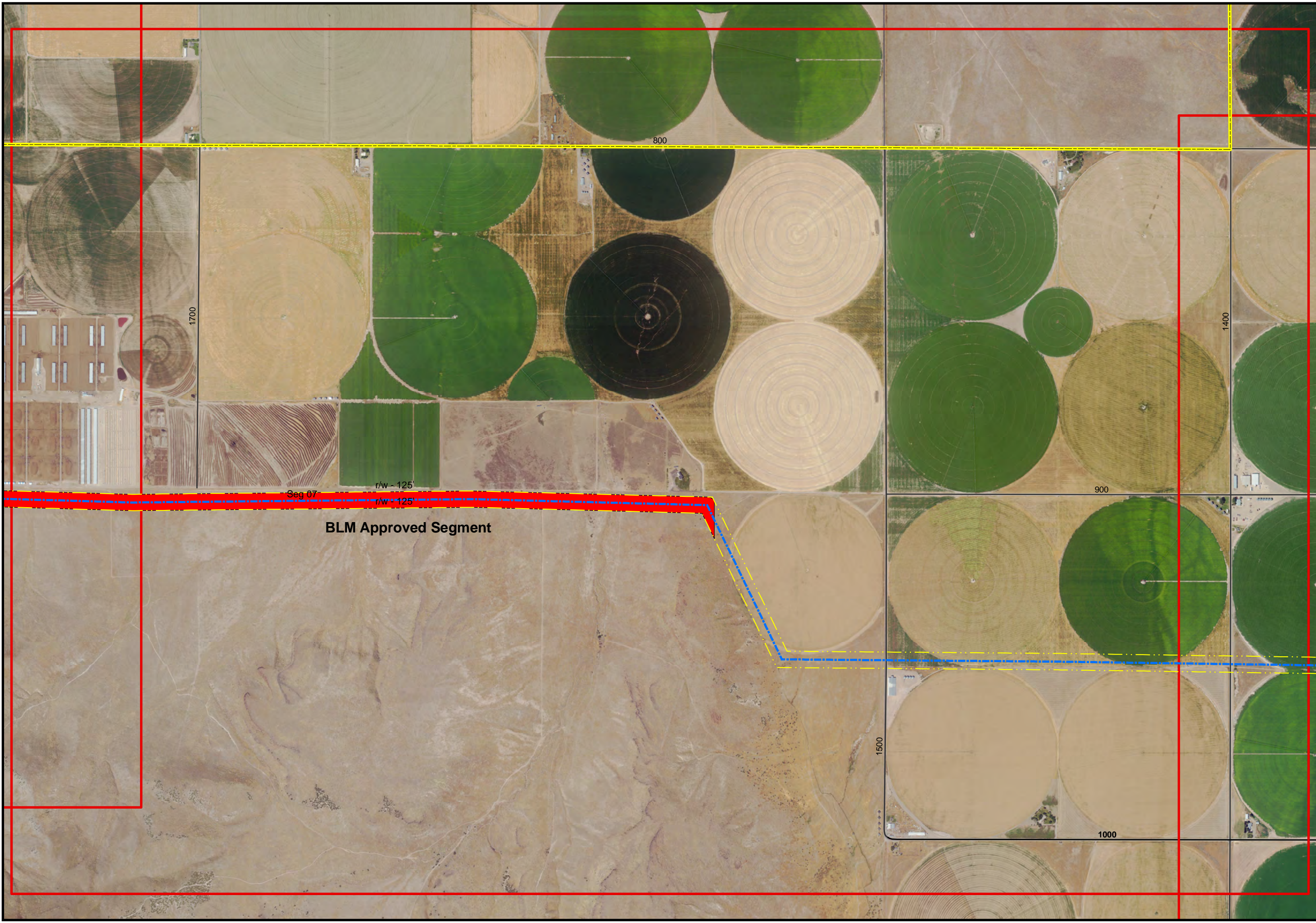
1 inch = 1,320 feet  
 (At original document size of 11"x17")

**Cassia County: Segment 7 Approved BLM Lands Route**

Route shown was drawn using the Proposed Route provided to Cassia County by the BLM in 2012. The intent of these maps is to provide a reference to the possible location of the Gateway West Transmission Line Project and not to provide a definitive location.

**BLM Approved Segment**

Seg 07  
 r/w - 125'  
 r/w - 125'

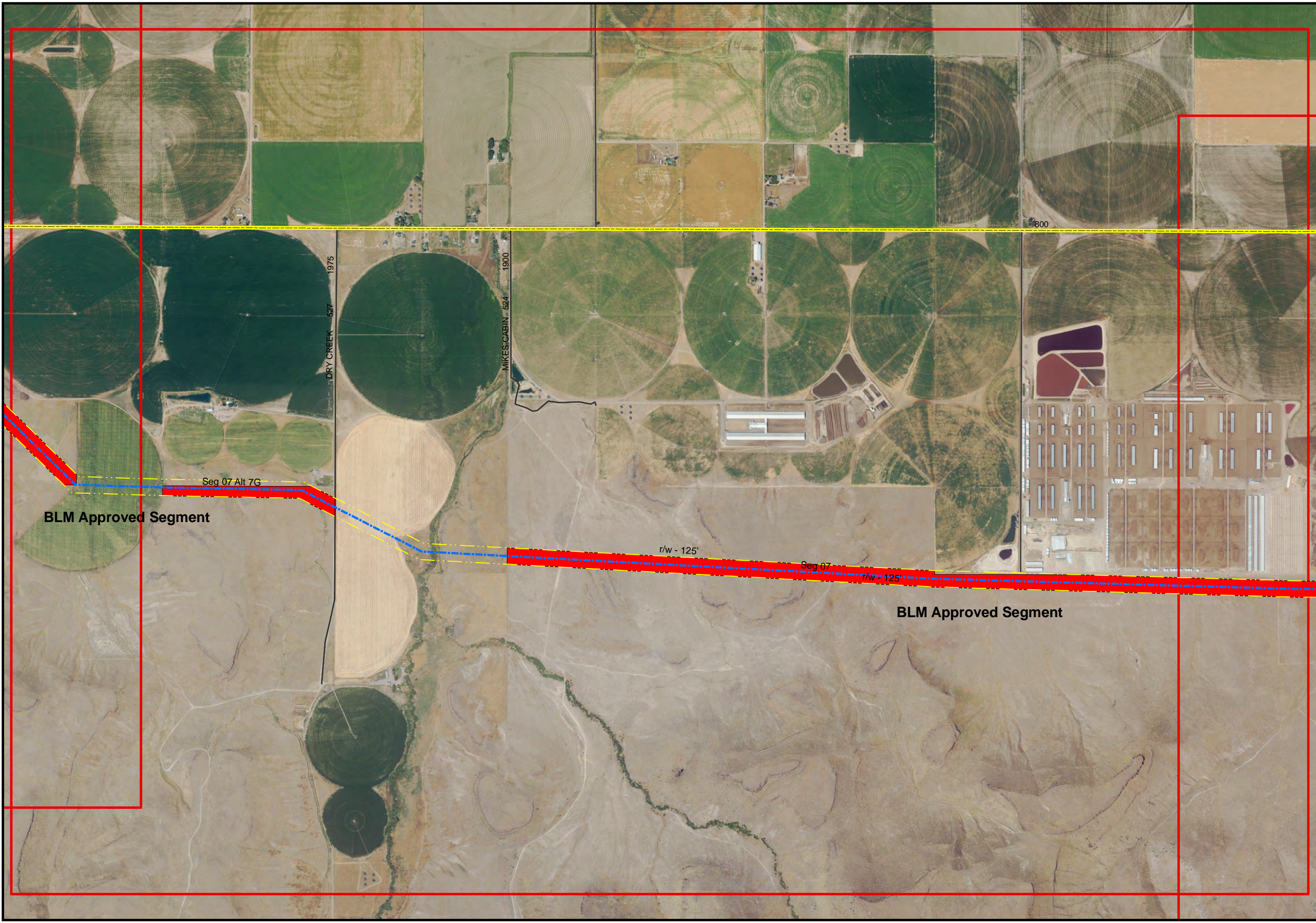


1 inch = 1,320 feet

(At original document size of 11"x17")

### Cassia County: Segment 7 Approved BLM Lands Route

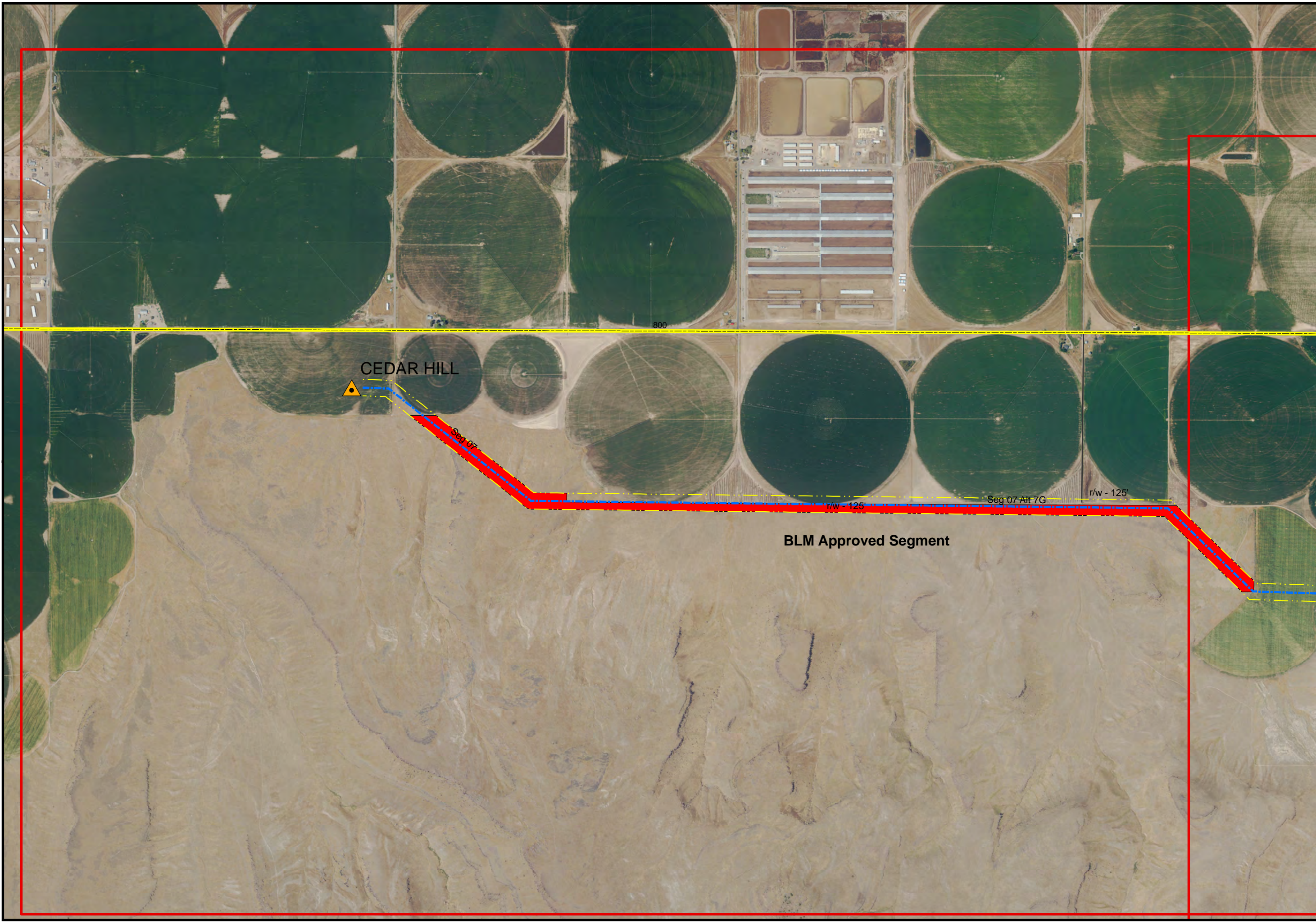
Route shown was drawn using the Proposed Route provided to Cassia County by the BLM in 2012. The intent of these maps is to provide a reference to the possible location of the Gateway West Transmission Line Project and not to provide a definitive location.



1 inch = 1,320 feet  
 (At original document size of 11"x17")

**Cassia County: Segment 7 Approved BLM Lands Route**

Route shown was drawn using the Proposed Route provided to Cassia County by the BLM in 2012. The intent of these maps is to provide a reference to the possible location of the Gateway West Transmission Line Project and not to provide a definitive location.



1 inch = 1,320 feet  
(At original document size of 11"x17")

**Cassia County: Segment 7 Approved BLM Lands Route**

Route shown was drawn using the Proposed Route provided to Cassia County by the BLM in 2012. The intent of these maps is to provide a reference to the possible location of the Gateway West Transmission Line Project and not to provide a definitive location.

BLM Approved Segment

CEDAR HILL



Seg 07

r/w - 125'

Seg 07 Alt 7G

r/w - 125'

800